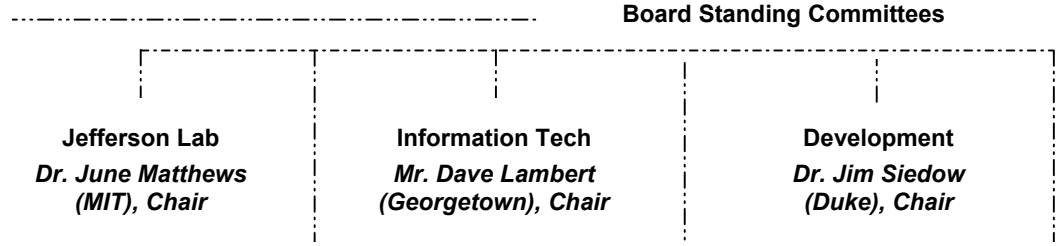


Council of Presidents
Chancellor Mark Emmert
(LSU), Chair
Chancellor John White,
(Arkansas), Vice-Chair
Chancellor Gordon Gee
(Vanderbilt), Past Chair

Board of Trustees
Dr. Donald Lehman (GWU),
Chair
Dr. Stephen Wallace (MD),
Vice-Chair
Dr. David Ernst (Vanderbilt),
Past Chair



President
Dr. Jerry Draayer

Executive Director
Corporate Secretary
Elizabeth Lawson

*** Internal Auditor**
Richard Rafter

Chief Financial Officer / Corporate Treasurer
Peter Bjonerud

Vice President, Government & University Relations
Hugh Loweth

*** Jefferson Lab Director**
Dr. Christoph Leemann

Director, Business Development
Matt Thomas

Director, Relations
Vacant

Acting Director, SCOP
Philip Bogden

Director, Information Technology Initiatives
Gary Crane

Director, Contract Relations
Grace Plummer

*** SURA/JLab Counsel**
Rhonda Scales

*** Jefferson Lab Management and Staff**

Southeastern Universities Research Association (SURA)
 Department of Energy's M&O Contractor for the Jefferson Lab
 Jerry P. Draayer, President

*** On-Site at Jefferson Lab**